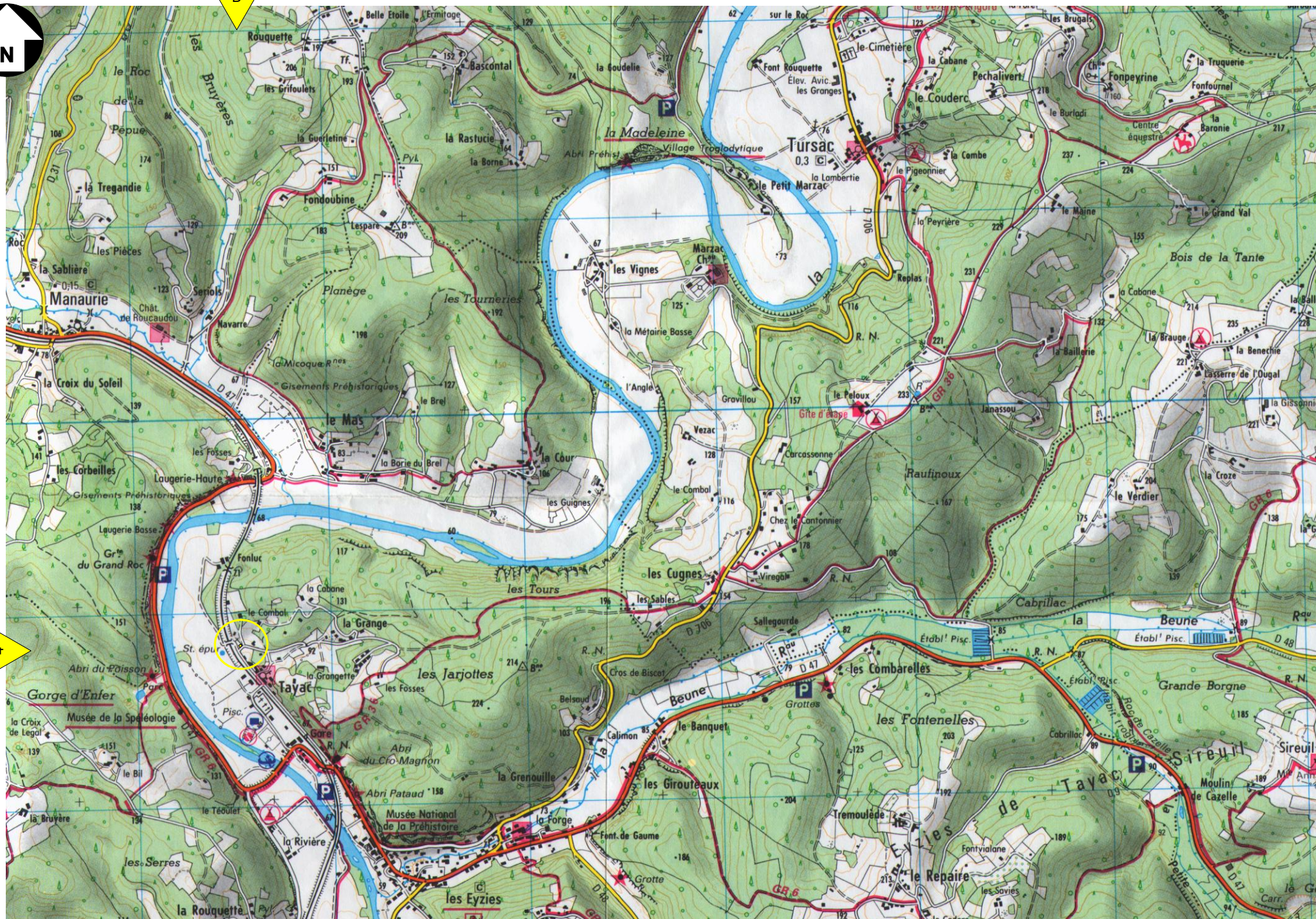




B

4



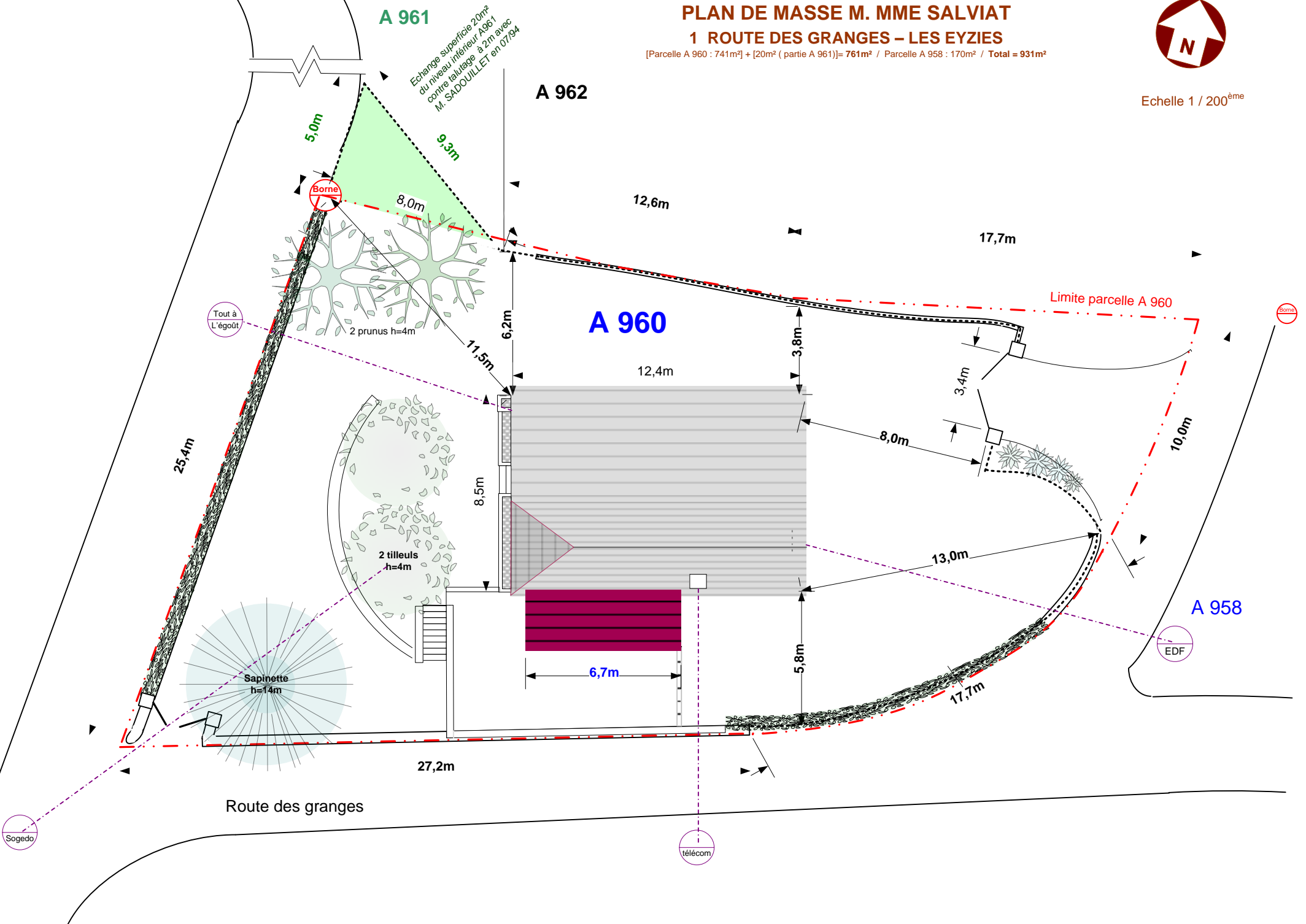
PLAN DE MASSE M. MME SALVIAT

1 ROUTE DES GRANGES – LES EYZIES

[Parcelle A 960 : 741m²] + [20m² (partie A 961)] = 761m² / Parcelle A 958 : 170m² / Total = 931m²



Echelle 1 / 200^{ème}





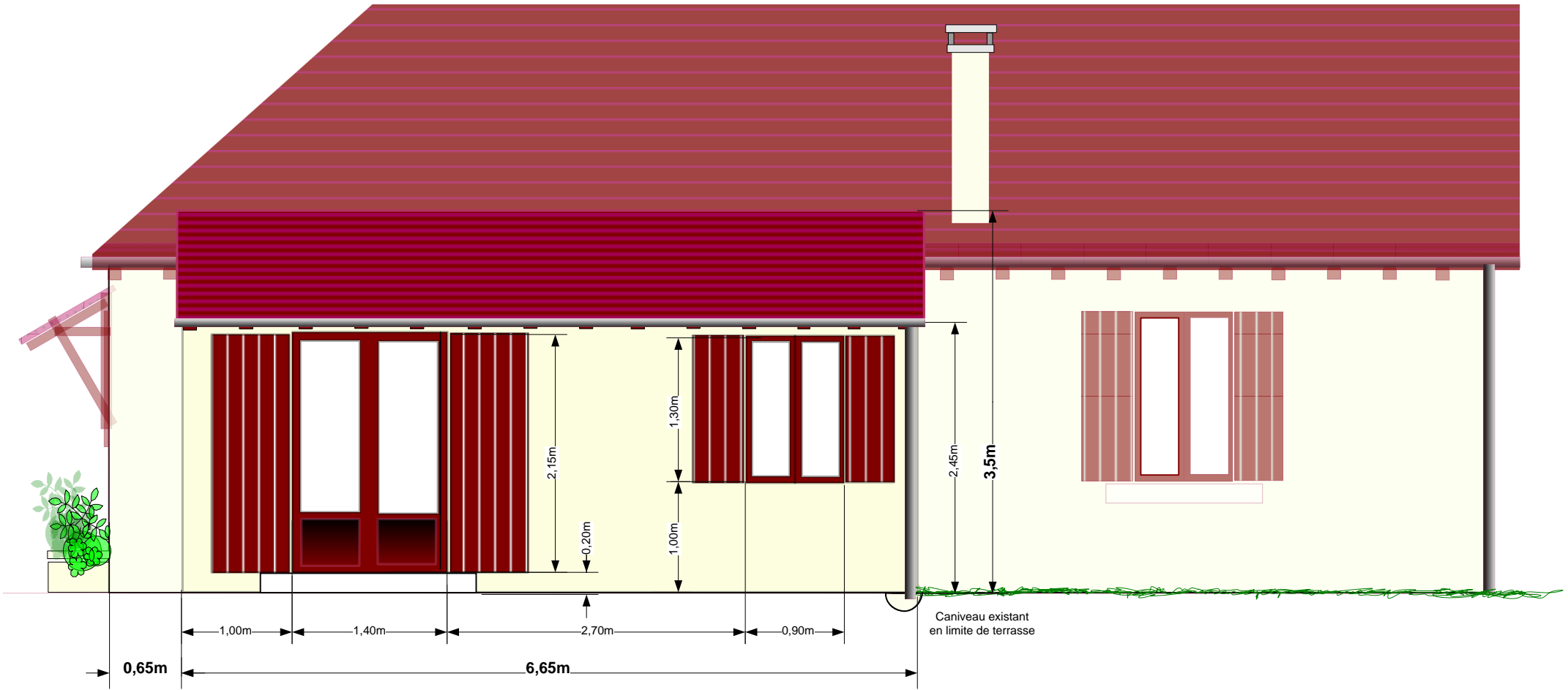
M. MME SALVIAT
1 ROUTE DES GRANGES – LES EYZIES

SURFACE TOTALE
100 m²

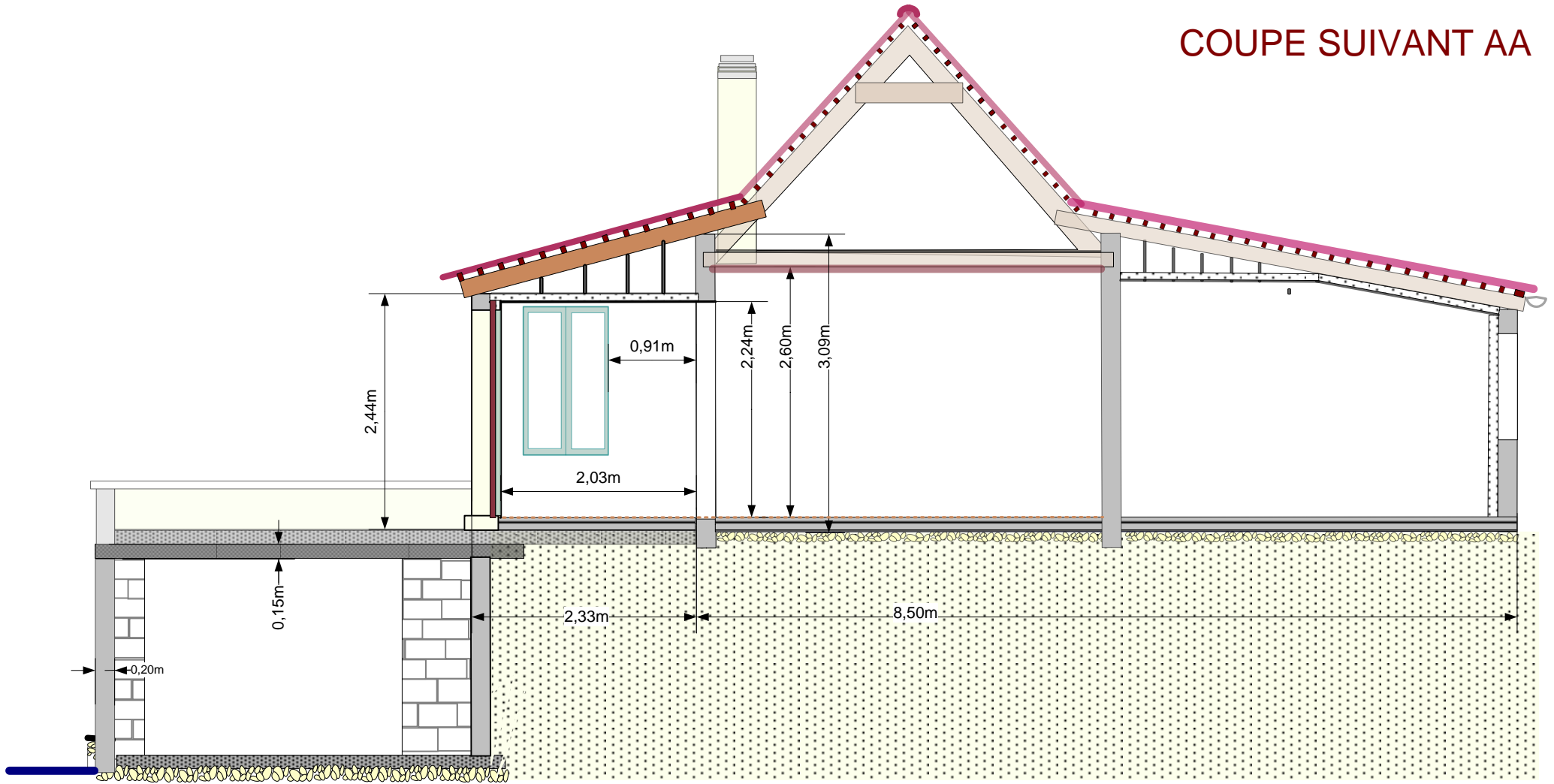
Terrasse

Caniveau existant en
 limite de terrasse

route des granges



COUPE SUIVANT AA



Route des granges